

OHIO ARTS COUNCIL  
FUNDING AND GRANT-MAKING PROFILE

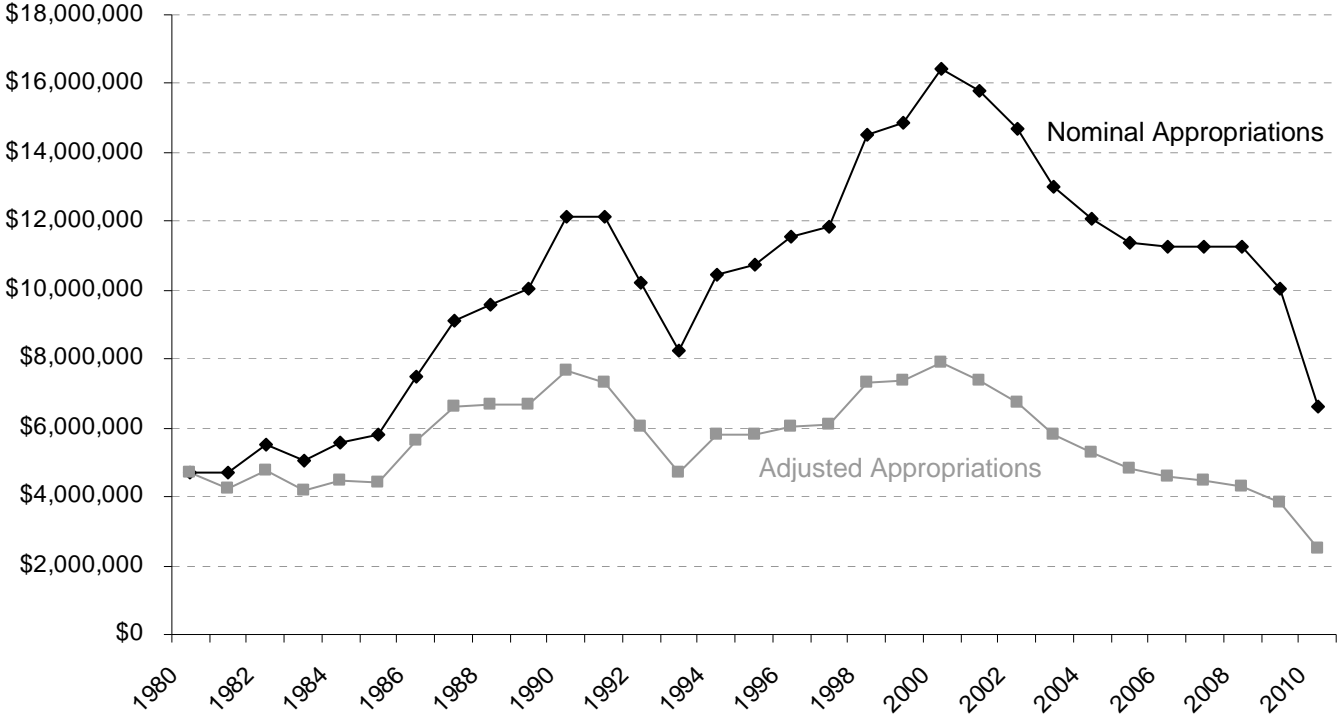
August 2009  
National Assembly of State Arts Agencies

# Legislative Appropriations and Total Revenue

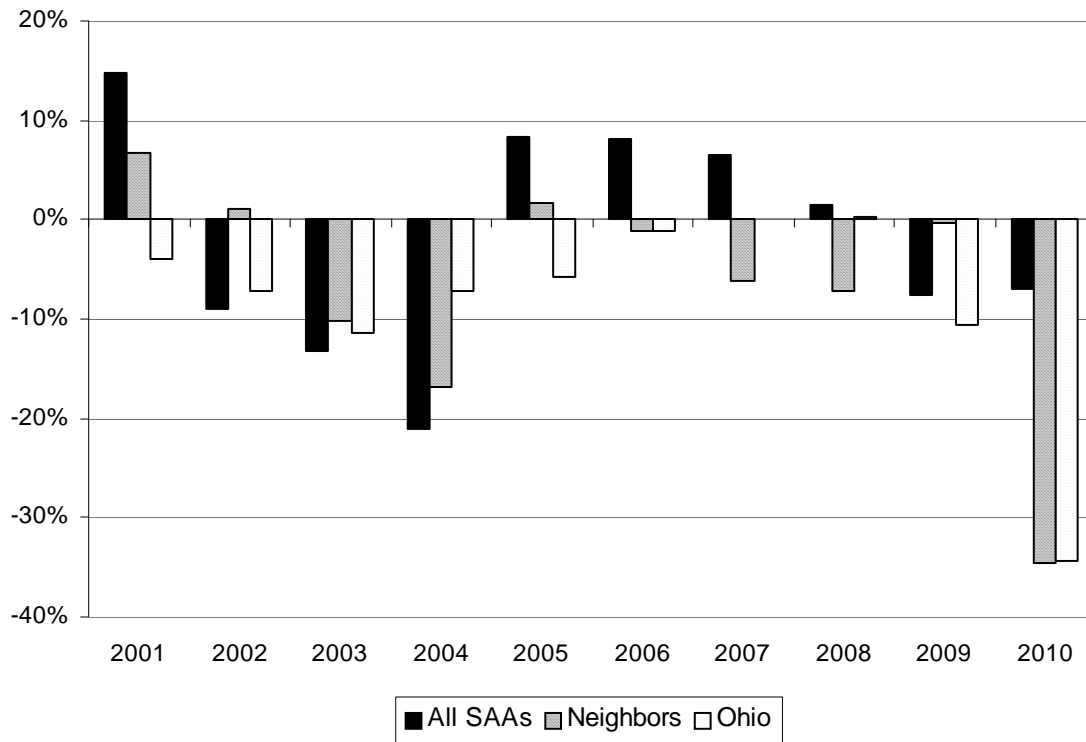
## Ohio Arts Council Legislative Appropriations Fiscal Years 1980-2010

Fiscal Year	Appropriation	Per Capita Spending	Per Capita Rank
1980	\$ 4,683,428	\$ 0.43	10
1981	\$ 4,707,218	\$ 0.44	12
1982	\$ 5,544,019	\$ 0.51	9
1983	\$ 5,024,452	\$ 0.47	12
1984	\$ 5,602,549	\$ 0.52	9
1985	\$ 5,784,562	\$ 0.54	15
1986	\$ 7,493,265	\$ 0.70	15
1987	\$ 9,088,539	\$ 0.85	13
1988	\$ 9,591,028	\$ 0.89	15
1989	\$ 10,023,924	\$ 0.93	14
1990	\$ 12,111,324	\$ 1.12	12
1991	\$ 12,129,849	\$ 1.12	11
1992	\$ 10,245,668	\$ 0.94	14
1993	\$ 8,260,686	\$ 0.75	20
1994	\$ 10,440,686	\$ 0.94	15
1995	\$ 10,739,047	\$ 0.97	15
1996	\$ 11,536,596	\$ 1.03	14
1997	\$ 11,867,073	\$ 1.06	15
1998	\$ 14,513,312	\$ 1.29	11
1999	\$ 14,877,380	\$ 1.32	16
2000	\$ 16,456,606	\$ 1.46	15
2001	\$ 15,791,294	\$ 1.39	15
2002	\$ 14,668,902	\$ 1.29	16
2003	\$ 12,988,187	\$ 1.14	14
2004	\$ 12,065,625	\$ 1.06	18
2005	\$ 11,375,734	\$ 0.99	19
2006	\$ 11,238,161	\$ 0.98	22
2007	\$ 11,238,161	\$ 0.98	22
2008	\$ 11,265,529	\$ 0.98	24
2009	\$ 10,059,904	\$ 0.88	24
2010	\$ 6,594,289	\$ 0.57	32

**Ohio Arts Council**  
**Total Legislative Appropriations, Nominal and Inflation-Adjusted Dollars**  
 Fiscal Years 1980-2010



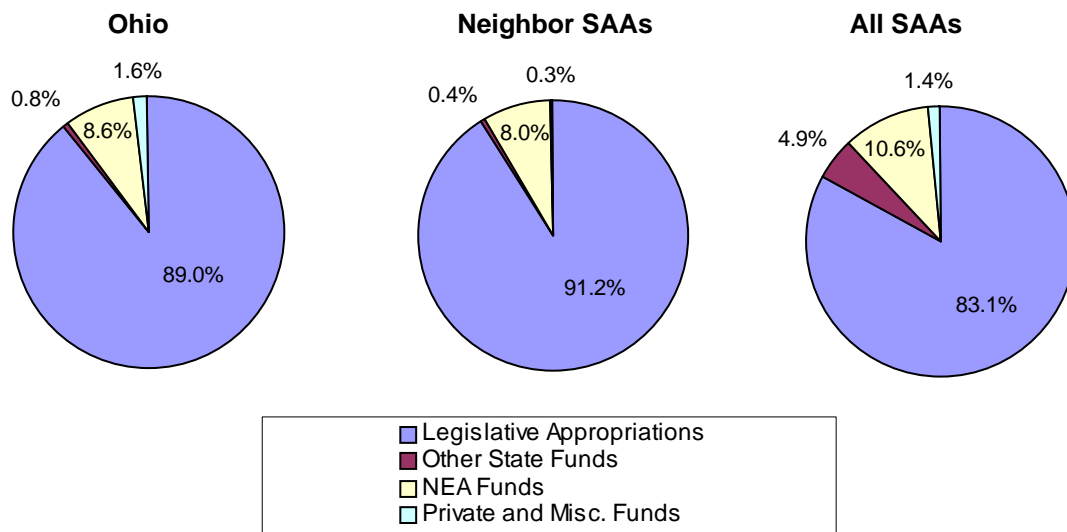
## Year-to-Year Percent Change in Appropriations, Fiscal Years 2001-2010



Neighbor states include MI, PA, IN, and IL. As of August 2009, PA and MI do not have finalized 2010 budgets, numbers are estimates based on the best guess of the agency.

Source: National Assembly of State Arts Agencies, Legislative Appropriations surveys

## Sources of Total Revenue Fiscal Year 2009



Neighbor states include MI, PA, IN, and IL.

Source: National Assembly of State Arts Agencies, Legislative Appropriations surveys

# Grant-Making Summary

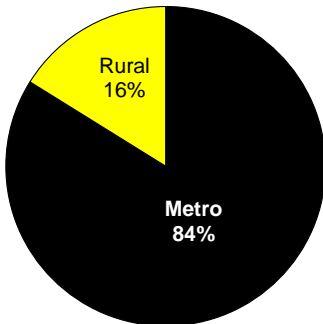
## Ohio Arts Council Grants, FY 2008

Total Grants	587
Total Grant Dollars	\$8,742,293
Median Grant	\$5,000
Median Operating Support Grant	\$9,143
Median Project Grant	\$4,000

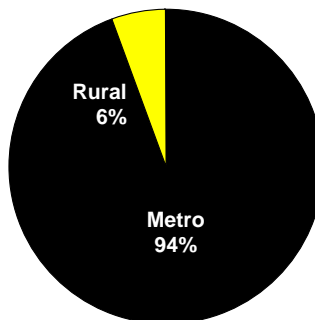
Source: NASAA - Final Descriptive Reports

## Metropolitan and Rural Grant-Making Ohio Arts Council, FY 2008

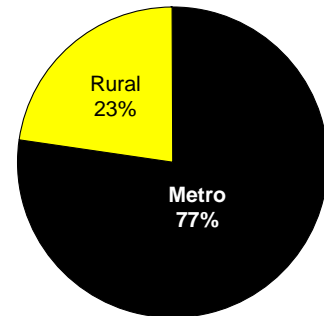
Number of Grants



Grant Dollars



Population



Source: NASAA - Final Descriptive Reports, U.S. Census

**Median Grant Size, FY 2008**  
Ohio vs. Neighbor SAA vs. All SAAs

	<b>General Operating Support</b>	<b>Arts Education</b>	<b>Individual Artists</b>
<b>Ohio</b>	\$9,143	\$5,996	\$4,000
<b>Neighbor SAAs</b>	\$8,210	\$7,900	\$2,000
<b>All SAAs</b>	\$8,930	\$2,667	\$1,500

Notes: Neighbor states include MI, PA, IN, and IL.

Grants are coded as "arts education" when 50% or more of funded activities are a part of an organized and systematic educational effort with the primary goal of increasing an identified learner's knowledge of and/or skills in the arts with measurable outcomes. Some grants outside of Ohio's arts education programs receive this designation and are reflected in the information above.

Source: NASAA - Final Descriptive Reports

**Arts Education Grants to Pre-Kindergarten and Adult Learners, FY 2008**

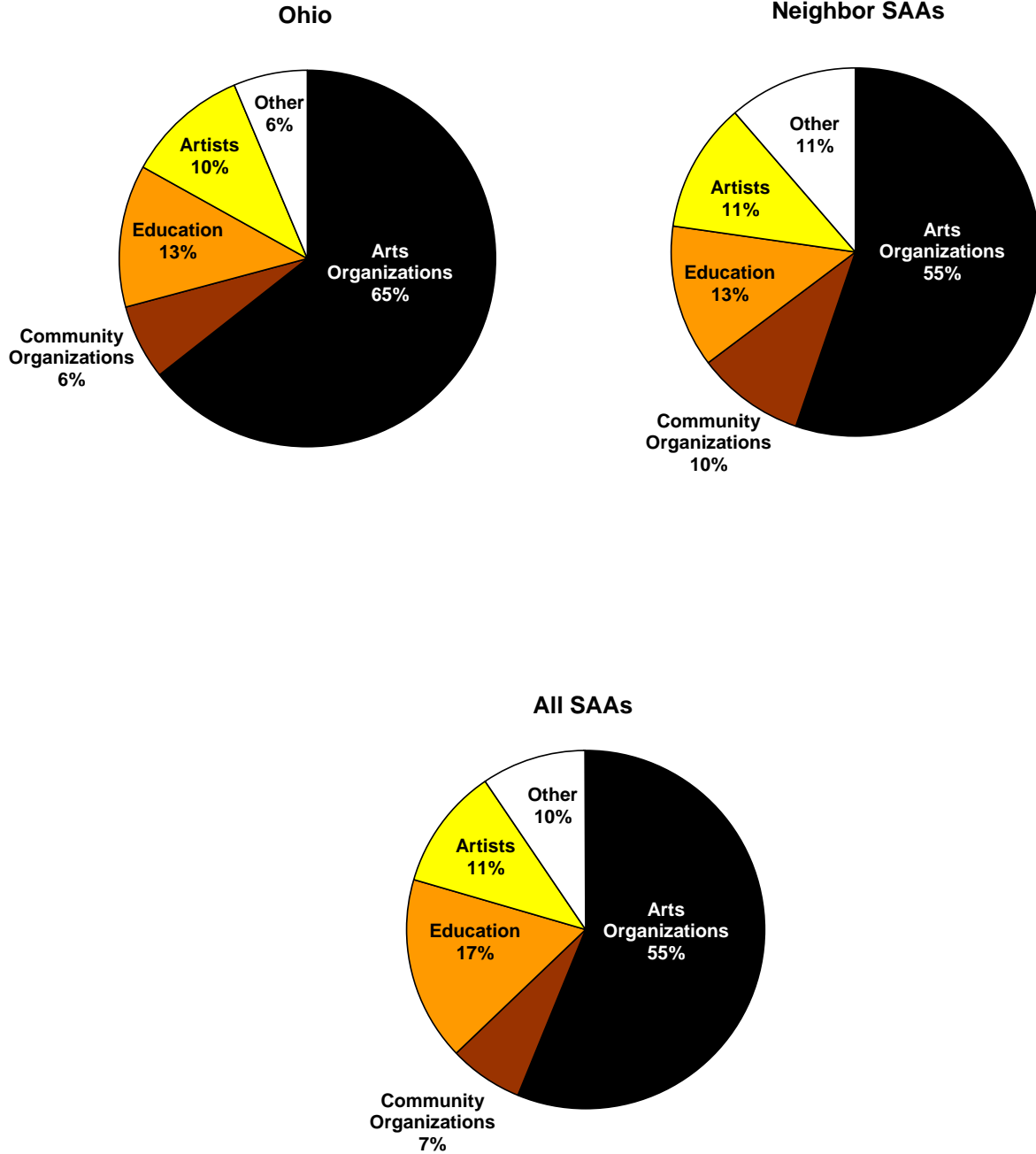
	<b>Pre-Kindergarten</b>		<b>Adult Learners</b>	
	<b>Percent of Grants</b>	<b>Percent of Dollars</b>	<b>Percent of Grants</b>	<b>Percent of Dollars</b>
<b>Ohio</b>	0.17%	0.13%	1.53%	0.53%
<b>Neighbor SAAs</b>	0.27%	0.32%	2.93%	2.52%
<b>All SAAs</b>	0.21%	0.18%	4.71%	3.74%

Notes: Neighbor states include MI, PA, IN, and IL.

Grants are coded as "arts education" when 50% or more of funded activities are a part of an organized and systematic educational effort with the primary goal of increasing an identified learner's knowledge of and/or skills in the arts with measurable outcomes. Projects that target specific audiences such as pre-kindergarten or adult learners are further coded as such. Some grants outside of an SAA's arts education programs receive these designations and may be reflected in the information above.

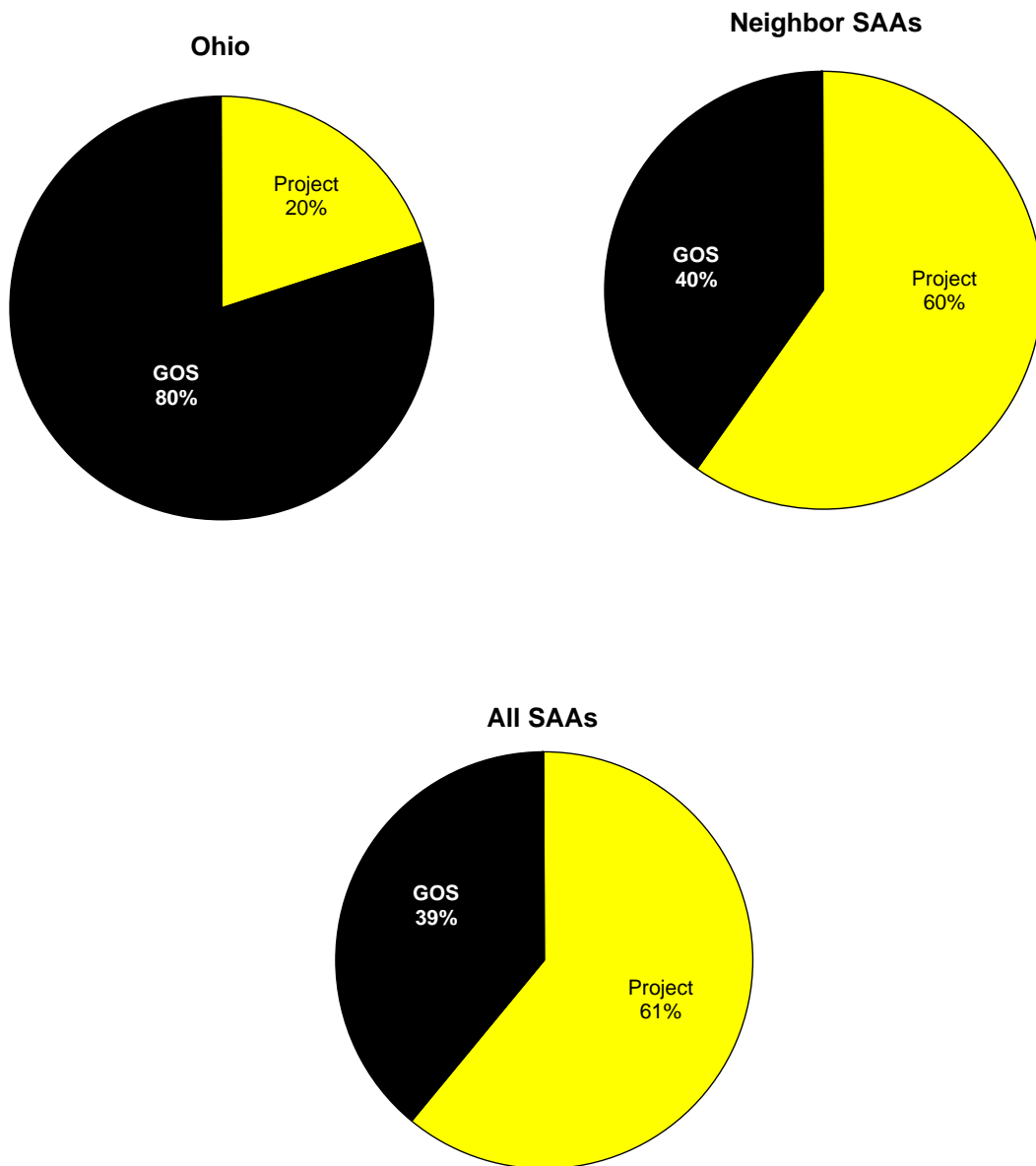
Source: NASAA - Final Descriptive Reports

## Distribution of Grant Awards by Recipient Organization FY 2008



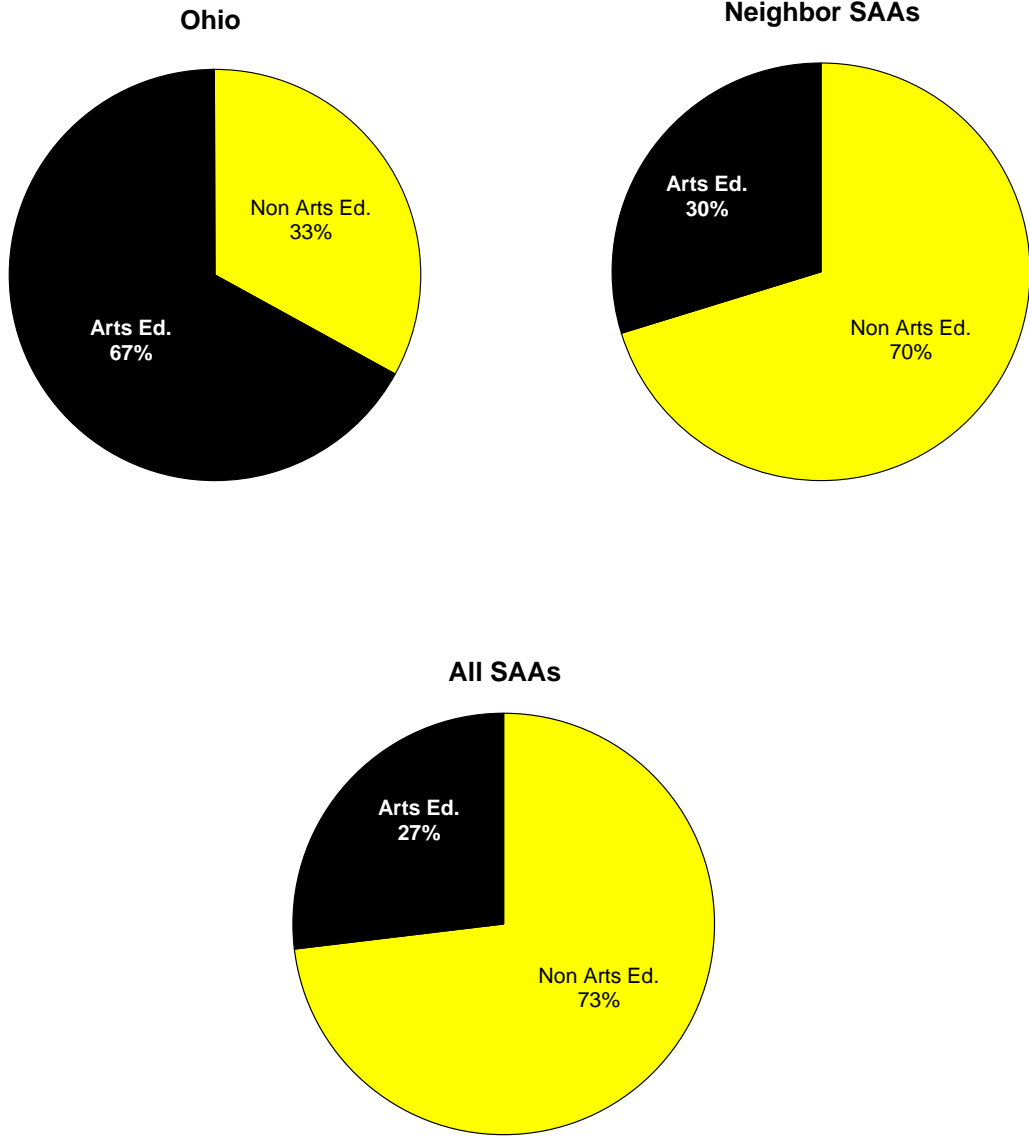
Note: "Other" includes print media, government agencies, health facilities, correctional institutions, etc.  
 Neighbor states include Illinois, Indiana, Michigan and Pennsylvania.  
 Source: NASAA - Final Descriptive Reports

## General Operating Support Grants, Fiscal Year 2008 Percentage of Total Grant Dollars



Neighbor states include Illinois, Indiana, Michigan and Pennsylvania.  
Source: NASAA - Final Descriptive Reports

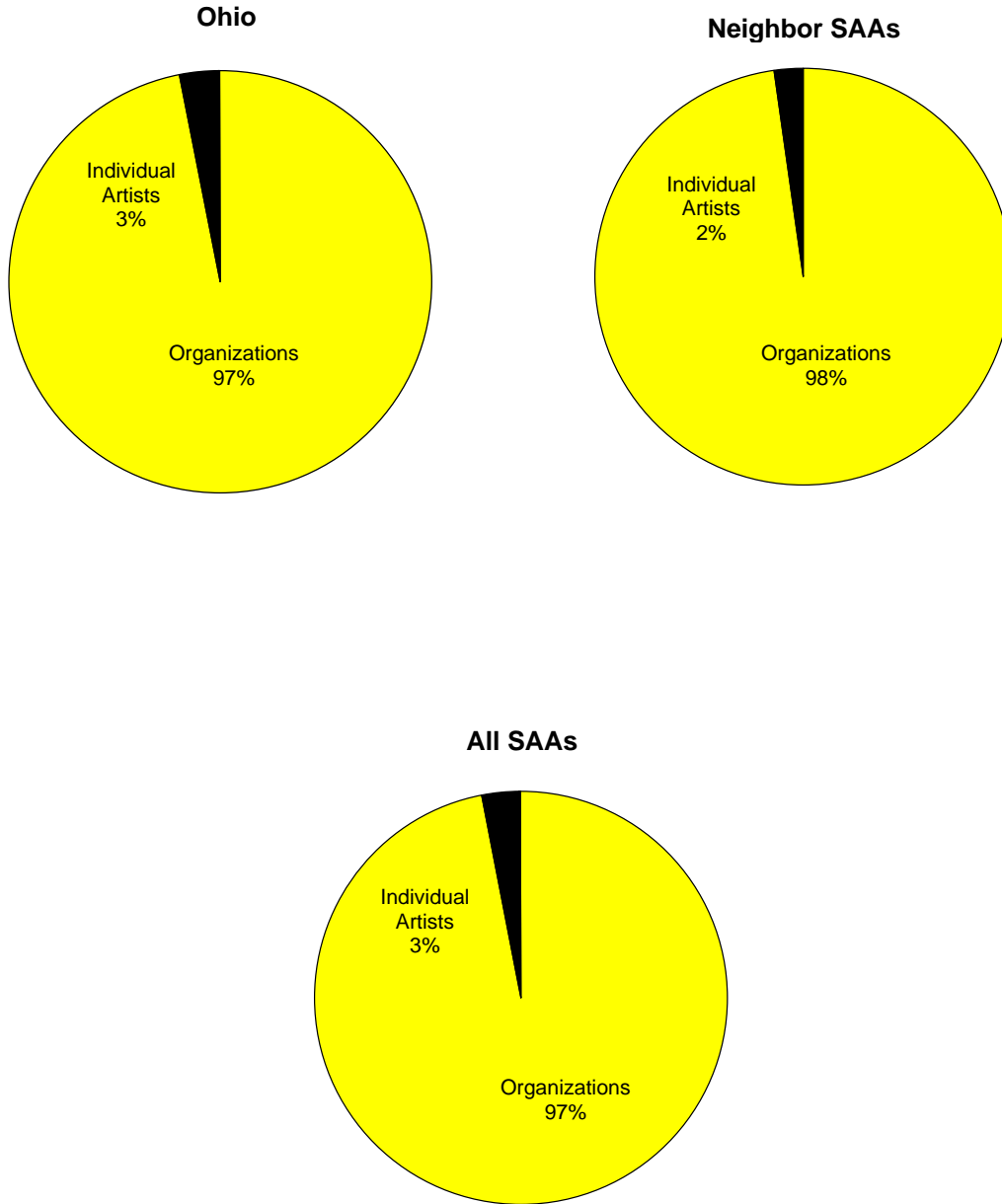
**Arts Education Grants, Fiscal Year 2008**  
Percentage of Total Grant Dollars



Notes: Neighbor states include Illinois, Indiana, Michigan and Pennsylvania. Grants are coded as "arts education" when 50% or more of funded activities are a part of an organized and systematic educational effort with the primary goal of increasing an identified learner's knowledge of and/or skills in the arts with measurable outcomes. Some grants outside of an SAA's arts education programs receive this designation and are reflected in the information above.

Source: NASAA - Final Descriptive Reports

**Grants to Individual Artists, Fiscal Year 2008**  
Percentage of Total Grant Dollars



Neighbor states include Illinois, Indiana, Michigan and Pennsylvania.  
Source: NASAA - Final Descriptive Reports